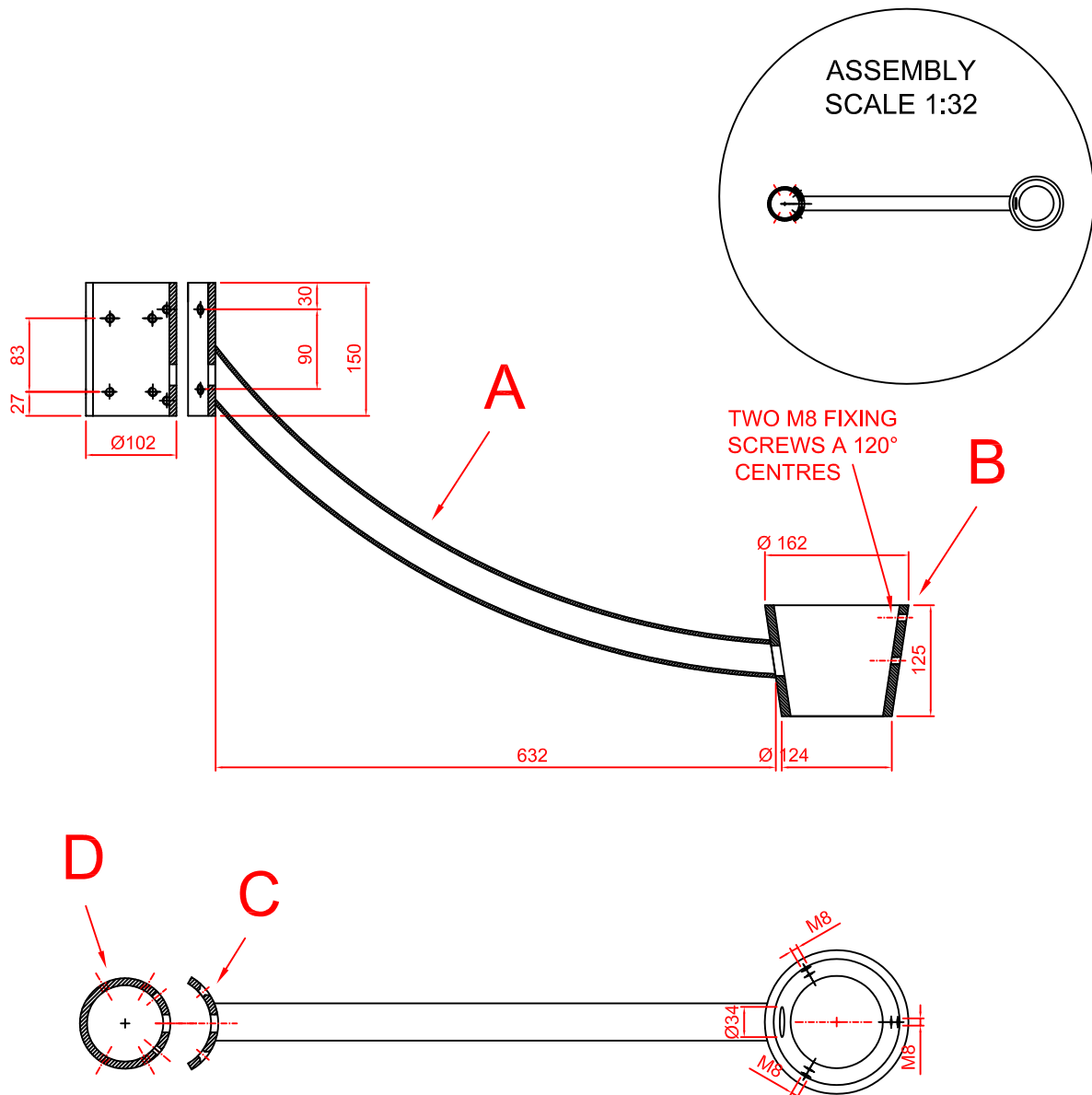


ARESE

single pole bracket detail

The bracket conforms to UNI EN 10219 steel is painted to match the luminaire pole.

- A) One, two or three stainless steel arms with a 632mm out reach from pole. The arms have a $\varnothing 42$ mm with a 4mm wall thickness.
- B) Steel collar to support luminaire with M8 grub screws.
- C) Attachment plate to locate onto column.
- D) Column and bracket fixing collar.



Certification: UNI EN ISO 9001:2000

SCH06: technical card of specifications
Revision: 00 - Date Rev. 03-11-2004 Scale: 1:8
SCH06_ARESE single pole bracket detail_R00


HOLOPHANE[®]
LEADER IN LIGHTING SOLUTION

Holophane Europe Ltd
Bond Avenue, Milton Keynes, MK1 1JG, United Kingdom
Tel : +44 (0) 1908 649292 Fax : +44 (0) 1908 367618
e-mail : info@holophane.co.uk
web : www.holophane.co.uk or www.holophane.eu.com